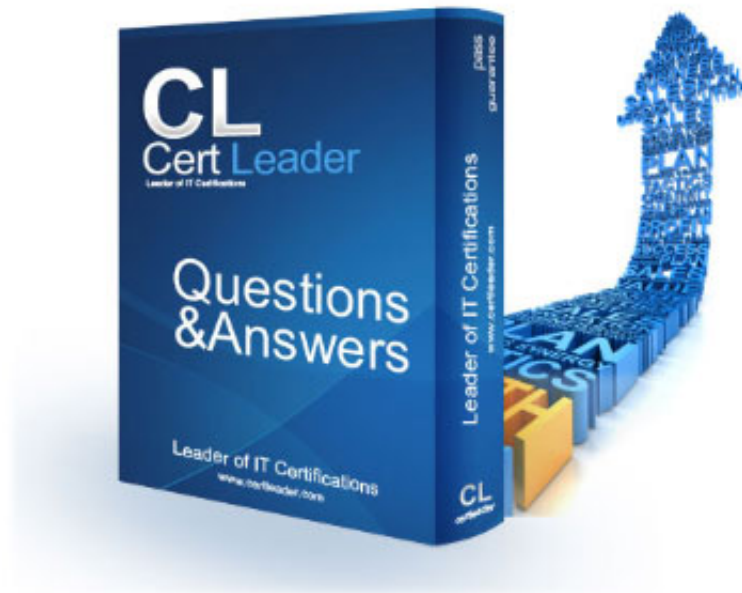


210-065 - CIVND Implementing Cisco Video Network Devices v1.0

<http://www.certleader.com/210-065-dumps.html>



1. Which four features are provided by Cisco TelePresence Management Suite? (Choose four.)

- A. Scheduling of video conference calls
- B. Built-in-bridge functionality for multiparty video conferences
- C. SIP-H.323 protocol interworking
- D. Centralized management of conference resources
- E. SMTP email event notification
- F. Endpoint configuration backup and restore
- G. Cisco TelePresence endpoint automated redundancy
- H. Automated resource optimization

Answer: A,D,E,F

2. Which protocol does the Cisco TelePresence Content Server use for call signaling?

- A. MGCP
- B. Cisco Proprietary
- C. SCCP
- D. H.323

Answer: D

3. Which encoder is best suited for professional, studio-quality audio and video processing?

- A. Scientific Atlanta Encoder
- B. Cisco Digital Media Encoder 1000
- C. Cisco Digital Media Encoder 2000
- D. Cisco Digital Media Encoder 3000

Answer: C

4. Which description of medianet is true?

- A. A set of protocols that accelerate the delivery of media across the network
- B. A family of switches and routers that support multimedia applications
- C. When the network works together with the endpoints to scale, optimize, and enhance the performance of collaboration components
- D. A capability of the network to enhance video streaming quality
- E. A Cisco proprietary feature that is built on hardware DSP resources

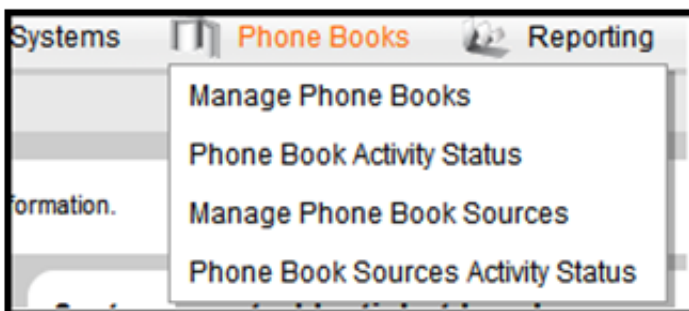
Answer: C

5. Which benefits does the Capture-Transform-Share solution provide?

- A. voice conferencing services
- B. WAN optimization services
- C. security and firewall services
- D. video conferencing services
- E. DNS, DHCP, and AD services
- F. video on demand and video streaming services

Answer: F

6. Refer to the exhibit.



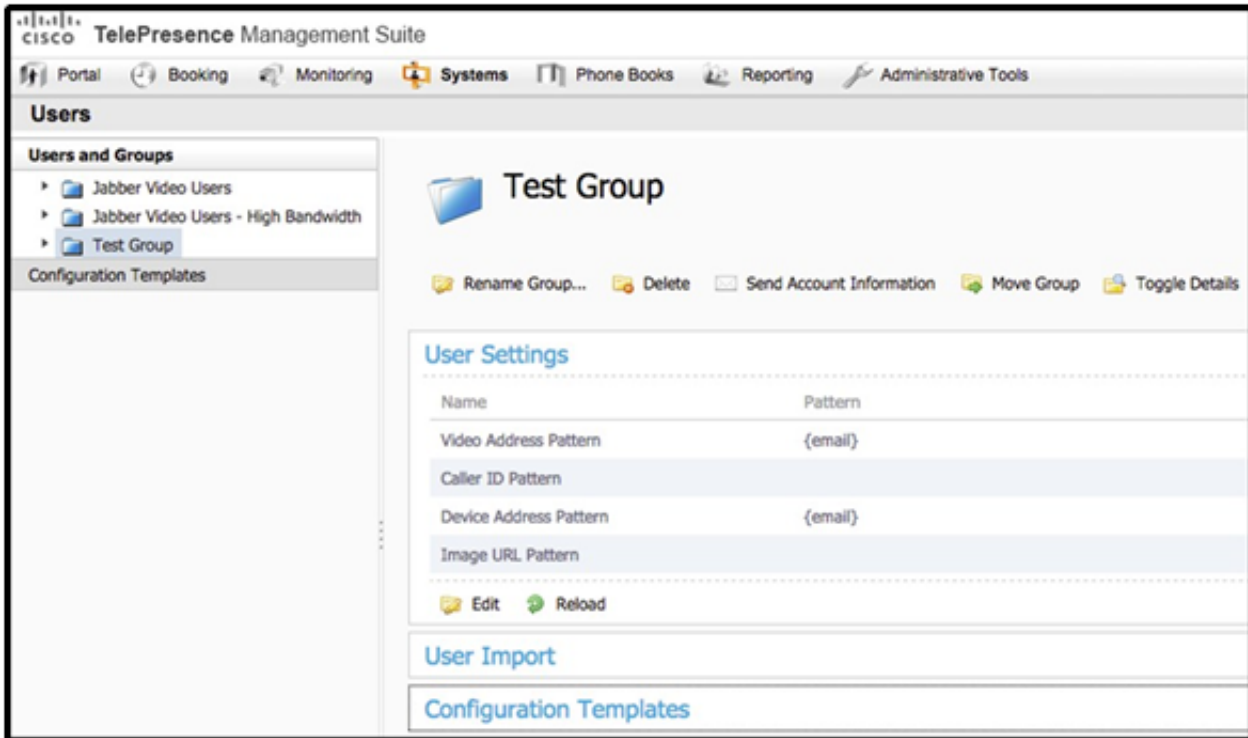
Which system does this web user interface refer to?

- A. Cisco Unified Communications Manager
- B. Cisco Video Communications Server

- C. Cisco Digital Media Manager
- D. Cisco TelePresence Management Suite

Answer: D

7. Refer to the exhibit.



Which configuration item shown in the exhibit should be used to assign the internal and external video communication server address for this group of users?

- A. User Settings > Video Address pattern
- B. Administrative Tools > User Settings
- C. Configuration Template > Edit Template
- D. User Import > Configuration

Answer: C

8. Management wants to modify Cisco TMS to allow users to configure the call behavior with their associated devices and dial from a single ID. Which feature needs to be enabled and configured?

- A. Smart Scheduler

B. Low-touch Provisioning

C. FindMe

D. CMR Provisioning

Answer: C

9. Which three features are supported by Cisco TMSPE? (Choose three.)

A. Simplified provisioning

B. LDAP user import

C. Scheduling via Microsoft Outlook

D. FindMe

E. Jabber for Windows

F. Automatic endpoint upgrades

Answer: A,B,D

10. When a call is placed from a Cisco VCS registered SIP-only endpoint to an H.323-only endpoint, which type of call license is consumed?

A. traversal call

B. non-traversal call

C. on-net call

D. interworking call

E. off-net call

F. Cisco Unified Workspace Licensing

Answer: A

11. XYZ Corporation has more than 1000 Cisco video endpoints and they want a high availability solution for scheduling and OBTP. Which option do you recommend?

A. standalone Cisco TelePresence Manager server

- B. cluster of Cisco TelePresence Manager servers
- C. standalone Cisco TelePresence Management Suite server
- D. cluster of Cisco TelePresence Management Suite servers in active/passive failover mode
- E. load-balanced cluster of Cisco TelePresence Management Suite servers
- F. Cisco Prime collaboration manager

Answer: D

12. Which Cisco TelePresence multipoint platform utilizes only Cisco Unified Communications Manager for call control?

- A. Cisco TelePresence Multipoint Control Unit
- B. Cisco TelePresence Multipoint Switch
- C. Cisco TelePresence Server
- D. Cisco TelePresence Media Bridge Server
- E. Cisco TelePresence System 500-32
- F. Cisco TelePresence SX20

Answer: B

13. Which scheduling and management application can be installed on any hardware platform that meets the minimum specifications that the end customer decides to deploy?

- A. Cisco Video Communications
- B. Cisco TelePresence Management Suite
- C. Cisco Digital Media Manager
- D. Cisco TelePresence Management Switch
- E. Cisco Unified Communications Manager

Answer: B

14. In an ISR Cisco Video Management and Storage System, what is the maximum storage capacity allowed per module?

- A. 1 TB per module
- B. 2 TB per module
- C. 3 TB per module
- D. 500 MB per module
- E. 750 MB per module
- F. 850 MB per module

Answer: A

15. In the H.264 video codec, which type of video frame is sent when the remote side requests a fast picture update?

- A. I-frame
- B. P-frame
- C. B-frame
- D. C-frame

Answer: A

16. Which well-known port is used to access the Cisco IP Video Surveillance Operations Manager via a secure, ActiveX web session?

- A. 20
- B. 80
- C. 421
- D. 434
- E. 443
- F. 8080

Answer: E

17. Refer to the exhibit.



Cisco TelePresence Video Communication Server Control

Status			
System			
VCS configuration			
Applications			
Maintenance			
Registrations by device			
Name	E.164	Type	Protocol
<input type="checkbox"/> 5002@osl147.local		SIP UA	SIP
<input type="checkbox"/> 5911@osl147.local		SIP UA	SIP
<input type="checkbox"/> 5912@osl147.local		SIP UA	SIP
<input type="checkbox"/> 5913@osl147.local		SIP UA	SIP
<input type="checkbox"/> 5914@osl147.local		SIP UA	SIP
<input type="checkbox"/> 5915@osl147.local		SIP UA	SIP
<input type="checkbox"/> 5916@osl147.local		SIP UA	SIP
<input type="checkbox"/> 5919@osl147.local		SIP UA	SIP
<input type="checkbox"/> 5921@osl147.local		SIP UA	SIP
<input type="checkbox"/> 5922@osl147.local		SIP UA	SIP
<input type="checkbox"/> 5923@osl147.local		SIP UA	SIP
<input type="checkbox"/> 5924@osl147.local		SIP UA	SIP
<input type="checkbox"/> 5925@osl147.local		SIP UA	SIP
<input type="checkbox"/> 5926@osl147.local		SIP UA	SIP
<input type="checkbox"/> 594@osl147.local		Gateway	H323
<input type="checkbox"/> 594@osl147.local		Gateway	H323
<input type="checkbox"/> C80 osl147 Instructor		Endpoint	H323
<input type="checkbox"/> mcu8510@osl147.local		SIP UA	SIP
<input type="checkbox"/> mcu8510@osl147.local	5919	MCU	H323
<input type="checkbox"/> multiway@osl147.local		SIP UA	SIP

You must dial the interactive response system of the multipoint control unit. What are the appropriate dual-tone multi-frequency digits to create an ad-hoc conference with an identifier of 2345?

- A. 2345
- B. 2345#
- C. 5919*2345
- D. 5919*2345#

Answer: D

18. An executive in XYZ Corporation wants to purchase a desktop video endpoint that can be used for conferencing, as well as a monitor when not in a conference. Which option do you recommend?

- A. C20
- B. EX90
- C. C90

- D. SX80
- E. MX300 2nd generation
- F. Cisco TelePresence Profile Series endpoint

Answer: B

19. Which three features does Cisco VCS provide? (Choose three.)

- A. native Cisco SCCP telephony integration
- B. SIP-H.323 interworking functionality
- C. native scheduling
- D. SIP trunk integration with Cisco Unified Communications Manager
- E. third-party standards-based H.323 and SIP device registration
- F. reverse proxy functionality

Answer: B,D,E

20. Which two options are characteristics of Cisco Jabber? (Choose two.)

- A. allows desktop sharing
- B. allows you to locate the active speaker
- C. allows instant messaging
- D. allows the One Button To Push feature

Answer: A,C

Thank You for Trying Our Product

* 100% Pass or Money Back

All our products come with a 90-day Money Back Guarantee.

* One year free update

You can enjoy free update one year. 24x7 online support.

* Trusted by Millions

We currently serve more than 30,000,000 customers.

* Shop Securely

All transactions are protected by VeriSign!

100% Pass Your 210-065 Exam with Our Prep Materials Via below:

<http://www.certleader.com/210-065-dumps.html>