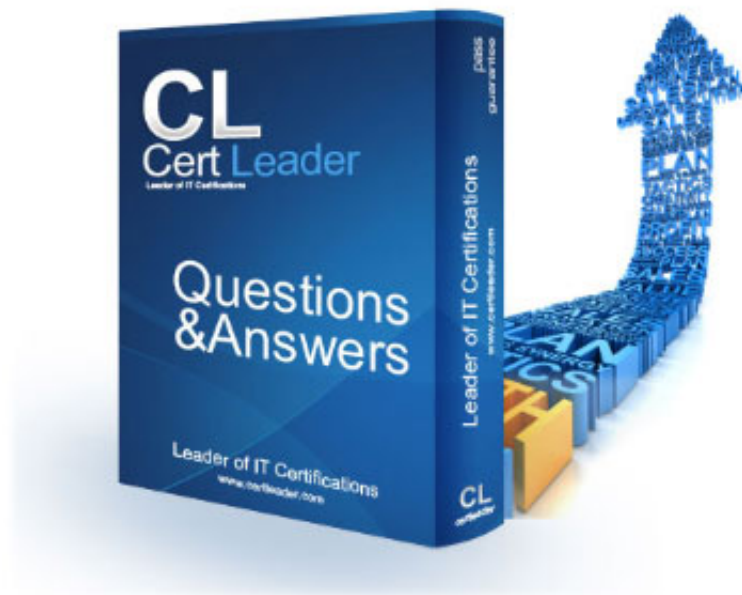


# 4A0-102 - Alcatel-Lucent Border Gateway Protocol

<http://www.certleader.com/4A0-102-dumps.html>



1. Two Alcatel-Lucent 7750 SRs are established BGP peers with the following add-paths configuration:

R1: configure router bgp add-paths ipv4 send 4 receive

R2: configure router bgp add-paths ipv4 send 2

If router R1 advertises three routes for a given prefix X, how many routes is router R2 expected to have for prefix X?

- A. None
- B. 2
- C. 3
- D. 4

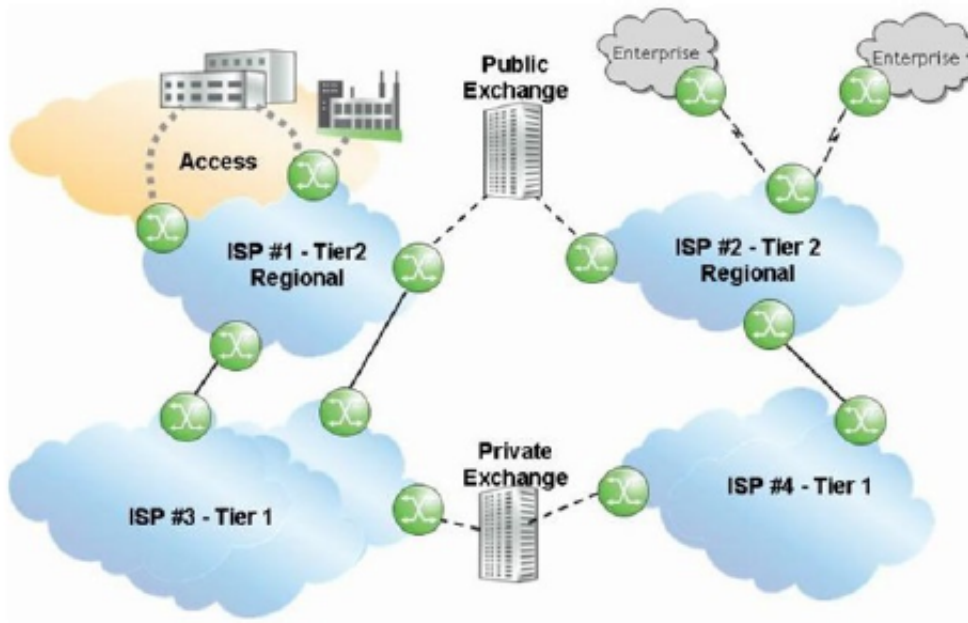
**Answer: C**

2. How are policy direction and data flow related on the Alcatel-Lucent 7750 SR?

- A. Import policies affect ingress data flow.
- B. Export policies affect ingress data flow.
- C. Both import and export policies affect ingress data flow.
- D. Policy direction and data flow are independent.

**Answer: B**

3. Click the exhibit.



Which of the following about the relationship between ISP 1 and ISP 3 is TRUE?

- A. ISP 1 is downstream from ISP 3 and is expected to push more traffic toward ISP 3 than it pulls from it.
- B. ISP 3 is downstream from ISP 1 and is expected to push more traffic toward ISP 1 than it pulls from it.
- C. ISP 1 is downstream from ISP 3 and is expected to pull more traffic from ISP 3 than it pushes toward it.
- D. ISP 3 is downstream from ISP 1 and is expected to pull more traffic from ISP 1 than it pushes toward it.

**Answer: C**

4. Which of the following regarding BGP confederations is FALSE?

- A. A confederation is a collection of Autonomous Systems advertised as a single AS number to BGP speakers outside the confederation.
- B. Each member AS must either maintain a full mesh of iBGP sessions, or use route reflection.
- C. Confederations can be used to subdivide ASs that have a large number of BGP speakers into smaller domains.
- D. A full mesh of intra-confederation eBGP sessions is required between the member ASs.

**Answer: D**

5. Which of the following is TRUE if a BGP session state is Connect?

- A. BGP is waiting for the TCP connection to be completed.

- B. BGP has established a TCP connection, and an Open message has been sent to that neighbor.
- C. The BGP session has been interrupted, and a TCP connection is being re-established.
- D. BGP has failed to establish a TCP connection to that neighbor, and ConnectRetry has been reset to zero.

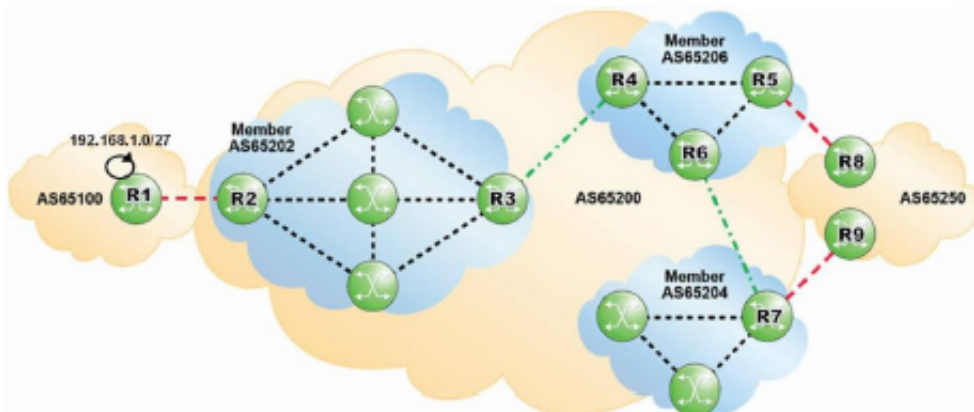
**Answer: B**

6. Which of the following statements regarding the Originator\_ID attribute is TRUE?

- A. The BGP router that originates an update sets the Originator\_ID.
- B. The Originator\_ID is set to the ClusterID of the advertising router reflector.
- C. Both confederation and route reflector topologies use the Originator\_ID.
- D. A BGP router ignores an update that contains its own BGP router ID as Originator\_ID.

**Answer: D**

7. Click the exhibit.



Which of the following statements best describes the BGP sessions within the given network?

- A. The session between AS 65202 and AS 65206 is an iBGP session.
- B. The session between AS 65204 and AS 65206 is an intra-confederation eBGP session.
- C. A BGP session is required between AS 65202 and AS 65204.
- D. The BGP sessions within the member ASes are known as inter-confederation BGP sessions.

**Answer: B**

8. Which of the following routes is NOT considered an internal route?

- A. A route received from a BGP peer within the same AS.
- B. A route originated by a router in a different cluster of the same AS.
- C. A route received from a BGP peer from a different member AS of a confederation.
- D. A route received from a BGP peer from the same member AS of a confederation.

**Answer: C**

9. Which of the following parameters does NOT have to match for an iBGP session to be successfully established?

- A. BGP version number.
- B. The local AS number.
- C. The Hold Time.
- D. Authentication.

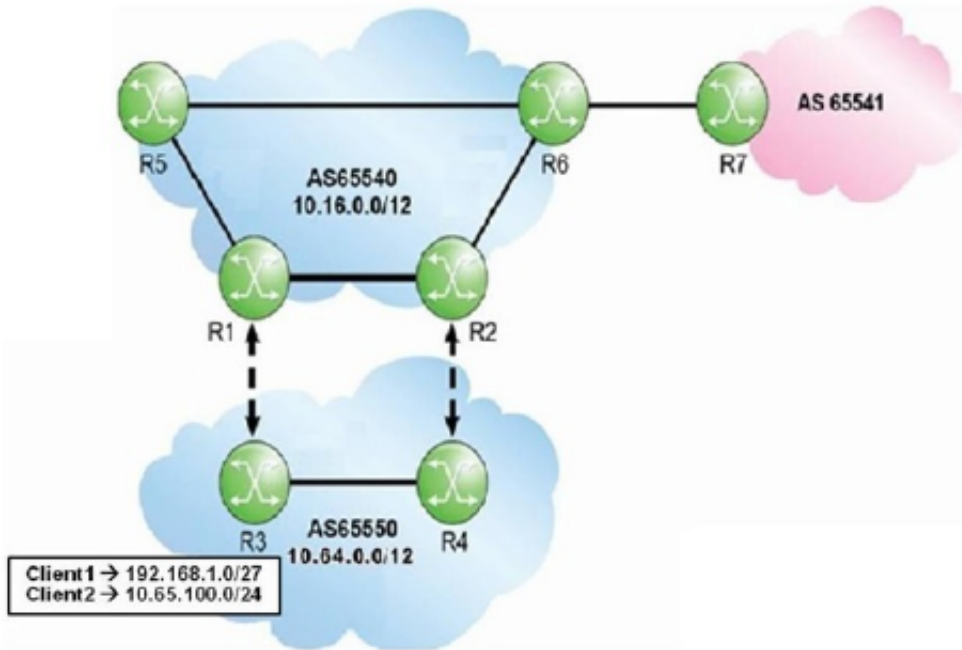
**Answer: C**

10. Which of the following regarding route reflectors is TRUE?

- A. Only the route reflector is configured with a cluster id.
- B. There can only be one route reflector in a cluster.
- C. Clients should have iBGP sessions with each other to maintain the mesh.
- D. There can only be one level of route reflectors in the topology.

**Answer: A**

11. Click the exhibit.

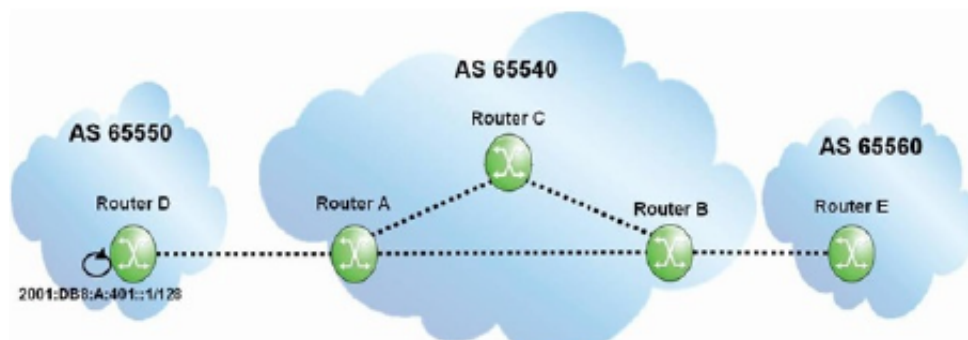


AS 65550 owns CIDR block 10.64.0.0/12. Router R3 is advertising Client1 and Client2 networks into BGP. Router R6 advertises the aggregate 10.64.0.0/12 to AS 65541 with "summary-only" enabled. Which of the following routes are received by router R7?

- A. Client1, Client2 and the aggregate.
- B. Only the aggregate.
- C. Only Client1 and the aggregate.
- D. Only Client2 and the aggregate.

**Answer: C**

12. Click the exhibit.



Assume all router-IDs are properly configured, and IPv6 link-local addresses are used to establish eBGP sessions. Given the following iBGP configuration on router A, what is the Next Hop for prefix 2001:DB8:A:401::1/128 on router B?

```
group "IPv6_iBGP"  
  family ipv6  
  peer-as 65540  
  neighbor 2001:DB8:2::2  
  exit  
  neighbor 2001:DB8:3::3  
  exit  
exit
```

- A. The IPv6 link-local address of the router D interface towards router A.
- B. The IPv6 link-local address of the router A interface towards router D.
- C. The IPv6 global address of router A.
- D. The IPv6 global address of router D.

**Answer: C**

13. Which of the following statements regarding BGP FRR is FALSE?

- A. The router must receive several BGP routes to compute a backup path.
- B. BGP FRR can be triggered by BFD.
- C. The backup path can use the same next hop as the primary path.
- D. BGP peer-tracking can be used to improve BGP FRR failure detection times.

**Answer: C**

14. Which of the following statements regarding BGP Add-Paths is FALSE?

- A. Add-Paths allows non-best paths to be advertised to a peer.
- B. Add-Paths capabilities are exchanged between peers after the BGP session is established.
- C. A BGP speaker must advertise the capability to receive multiple paths from its peer.
- D. A BGP speaker must advertise the capability to send multiple paths to its peer.

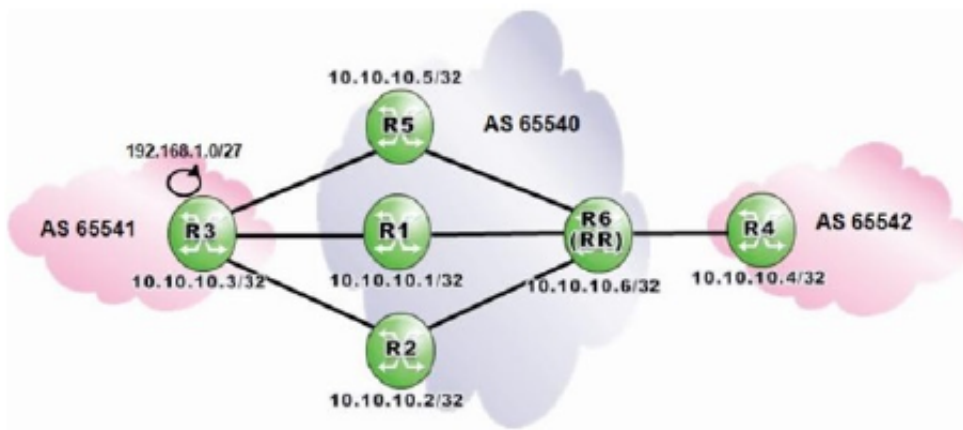
**Answer: B**

15. Which of the following statements regarding BGP route selection is TRUE?

- A. Lower local preference is preferred over higher local preference.
- B. Higher MED is preferred over lower MED.
- C. Higher origin code is preferred over lower origin code.
- D. Lower BGP router ID is preferred over higher BGP router ID.

**Answer: D**

16. Click the exhibit.

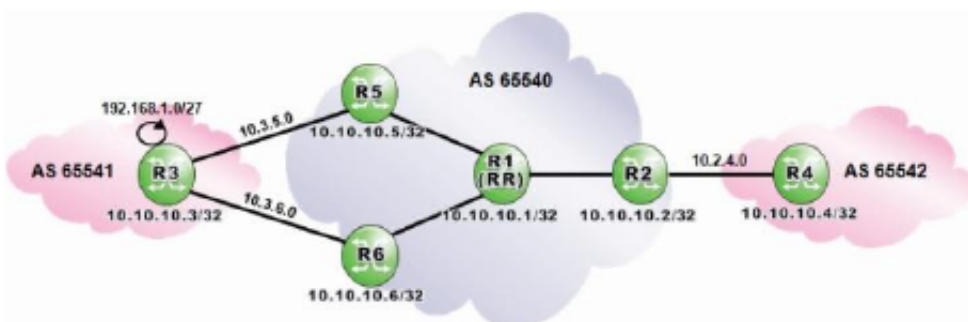


Router R6 is a route reflector with clients R1, R2 and R5. Router R3 advertises the prefix 192.168.1.0/27 to routers R1, R2 and R5. How many routes for prefix 192.168.1.0/27 will router R6 receive?

- A. 1
- B. 2
- C. 3
- D. None

**Answer: C**

17. Click the exhibit.





Router R1 is a route reflector with clients R2, R5 and R6. Router R3 advertises the prefix 192.168.1.0/27 to routers R5 and R6. Assuming that routers R1, R2 and R4 are configured with "add-paths ipv4 send 2 receive", what is the expected output of "show router bgp routes" when executed on router R2?

- A. Flag Network LocalPref MED  
NextHop As-Path Path-Id VPNLabel  
-----  
u>i 192.168.1.0/27 None None  
10.10.10.5 1 -  
65541  
r 192.168.1.0/27 None None  
10.10.10.6 2 -  
65541
- B. Flag Network LocalPref MED  
NextHop As-Path Path-Id VPNLabel  
-----  
u>i 192.168.1.0/27 None None  
10.10.10.5 None -  
65541  
r 192.168.1.0/27 None None  
10.10.10.6 None -  
65541
- C. Flag Network LocalPref MED  
NextHop As-Path Path-Id VPNLabel  
-----  
u>i 192.168.1.0/27 None None  
10.10.10.1 1 -  
65541  
r 192.168.1.0/27 None None  
10.10.10.1 2 -  
65541
- D. Flag Network LocalPref MED  
NextHop As-Path Path-Id VPNLabel  
-----  
u>i 192.168.1.0/27 None None  
10.10.10.1 None -  
65541  
r 192.168.1.0/27 None None  
10.10.10.1 None -  
65541

- A. Option A
- B. Option B
- C. Option C
- D. Option D

**Answer: A**

18. Which of the following is TRUE if the state of one BGP neighbor shows Active?

- A. The neighbor will send a Keepalive message.
- B. The router is trying to initiate a TCP connection to that neighbor.

- C. The router received an Open message with the correct parameters.
- D. The router is actively exchanging updates with that neighbor.

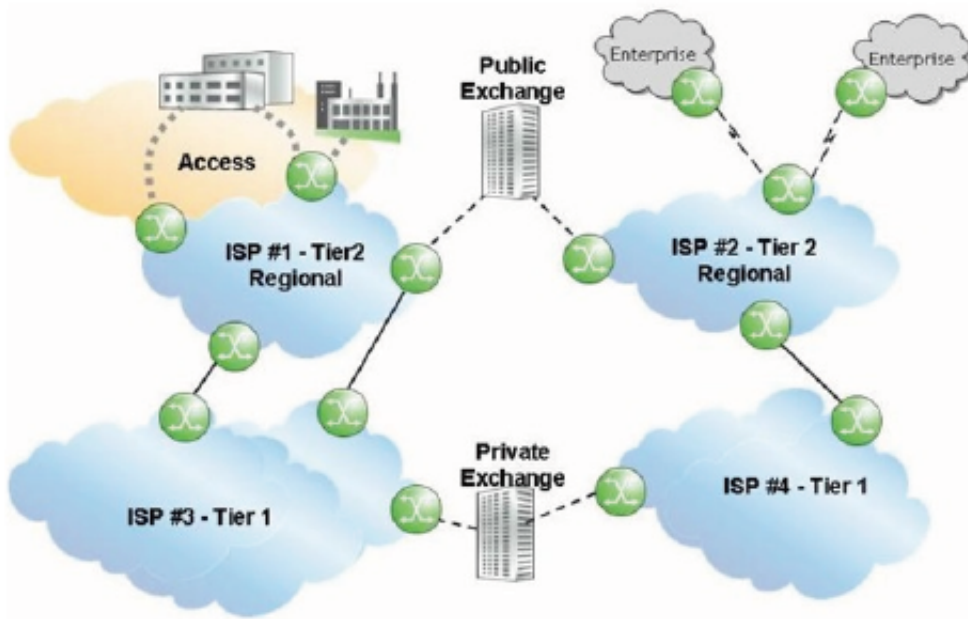
**Answer: B**

19. From what range are 16-bit private AS numbers selected?

- A. 64496 – 64511
- B. 1 – 56319
- C. 64512-65534
- D. 64513-65535
- E. There are no defined private AS numbers; there are only private IP addresses.

**Answer: C**

20. Click the exhibit.



Given that ISP 1 and ISP 2 are Tier 2 providers, and that ISP 3 and ISP 4 are Tier 1 providers, what is the most likely relationship between the ISPs?

- A. ISP 1 and ISP 2 have a public transit relationship, while ISP 3 and ISP 4 have a private transit relationship.
- B. ISP 1 and ISP 2 have a private transit relationship, while ISP 3 and ISP 4 have a public transit relationship.
- C. ISP 1 and ISP 2 have a private peering relationship, while ISP 3 and ISP 4 have a public peering relationship.

D. ISP 1 and ISP 2 have a public peering relationship, while ISP 3 and ISP 4 have a private peering relationship.

**Answer: D**

## Thank You for Trying Our Product

\* 100% Pass or Money Back

All our products come with a 90-day Money Back Guarantee.

\* One year free update

You can enjoy free update one year. 24x7 online support.

\* Trusted by Millions

We currently serve more than 30,000,000 customers.

\* Shop Securely

All transactions are protected by VeriSign!

**100% Pass Your 4A0-102 Exam with Our Prep Materials Via below:**

<http://www.certleader.com/4A0-102-dumps.html>