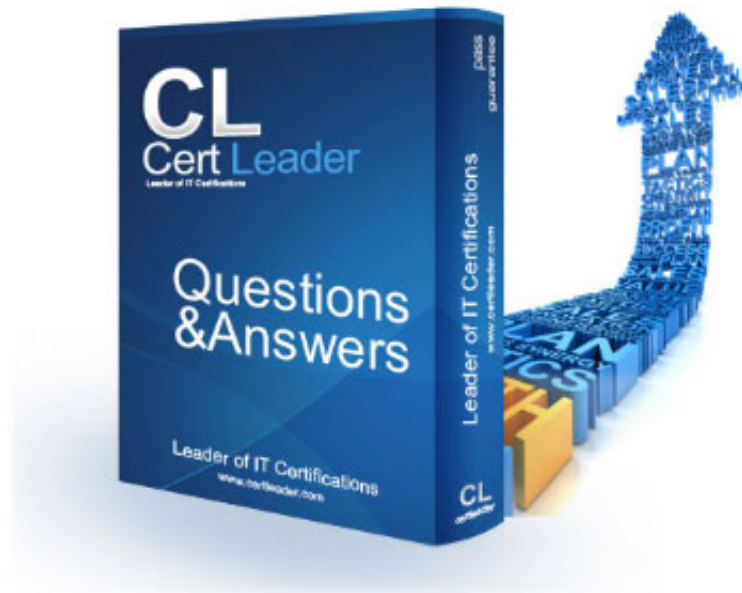


640-911 - DCICN Introducing Cisco Data Center Networking

<http://www.certleader.com/640-911-dumps.html>



1. What does RIPv1 send to its neighbors?

- A. Information about changed routes
- B. Information about new routes
- C. The entire routing table
- D. Information about deleted routes

Answer: C

Explanation:

"On receiving the Routing table, the router processes each entry of the routing table as per the following rules"

http://en.wikipedia.org/wiki/Routing_Information_Protocol

2. Which action will a router take if it does not know the destination MAC address of a host?

- A. Flood the packet out of every port.
- B. Drop the packet.
- C. Send an ARP request.
- D. Send a proxy ARP request.
- E. Send an ICMP unreachable message back to the source.

Answer: C

3. Which two statements describe two benefits of a star topology compared to a mesh topology? (Choose two.)

- A. New stations can be added quickly and easily.
- B. Troubleshooting connectivity is easier.
- C. There is not a single point of failure.
- D. A single cable failure will not bring down the entire network.
- E. It has the absolute least likelihood of having a collision

Answer: A,B

4. Which two networking devices operate at Layer 1 of the OSI model? (Choose two.)

- A. Repeater
- B. Bridge
- C. Switch
- D. Router
- E. Hub

Answer: A,E

Explanation:

It defines the electrical and physical specifications of the data connection. It defines the relationship between a device and a physical transmission medium (e.g. a copper or fiber optical cable). This includes the layout of pins, voltages, line impedance, cable specifications, signal timing, hubs, repeaters, network adapters, host bus adapters (HBA used in storage area networks) and more."

http://en.wikipedia.org/wiki/OSI_model

5. Unlike IPv6, which feature is available only in IPv4?

- A. broadcast
- B. anycast
- C. multicast
- D. unicast

Answer: A

6. VLAN 10 is assigned IP address 10.1.1.1 with subnet mask 255.255.255.0. Which configuration is used to route the IP subnet but not form OSPF neighbors on a Cisco Nexus 7000 switch?

- A)

```
feature ospf
!  
interface Vlan10  
ip address 10.1.1.1/24  
no shutdown  
ip router ospf 1  
ip passive-interface ospf 1  
!  
router ospf 1
```

B)

```
feature ospf
!  
interface Vlan10  
ip address 10.1.1.1/24  
no shutdown  
!  
router ospf 1  
passive-interface default  
no ip passive-interface Vlan10
```

C)

```
feature ospf
!  
interface Vlan10  
ip address 10.1.1.1/24  
no shutdown  
!  
router ospf 1  
ip passive-interface Vlan10
```

D)

```
feature ospf
!
interface Vlan10
ip address 10.1.1.1/24
no shutdown
ip router ospf 1
!
router ospf 1
```

- A. Option A
- B. Option B
- C. Option C
- D. Option D

Answer: A

7. Which two layers of the OSI model are combined in the Internet protocol suite network access layer?
(Choose two.)

- A. 1
- B. 2
- C. 3
- D. 4
- E. 5
- F. 6
- G. 7

Answer:: A,B

Explanation:

http://en.wikipedia.org/wiki/Internet_protocol_suite

8. What is the dotted hexadecimal representation of the IP address 172.13.99.225?

- A. AC.0D.63.E1

- B. AB.63.99.D5
- C. E2.1D.E1.66
- D. BC.0C.C3.1F
- E. CC.0D.F3.21

Answer: A

9. What TCP/IP layer would handle UDP traffic flows?

- A. internetwork
- B. network interface
- C. transport
- D. physical

Answer: C

10. In an IPv6 address, how many bits are used for the interface identifier?

- A. 48
- B. 16
- C. 64
- D. 128
- E. 10

Answer: C

11. What is the command sequence to force a Cisco Nexus 6000 switch to boot using the golden BIOS image?

- A. Press Ctrl-Shift-6 within 30 seconds of when power is supplied to the switch.
- B. Press Ctrl-] within 2 seconds of when power is supplied to the switch.
- C. Press Ctrl-] within 30 seconds of when power is supplied to the switch.
- D. Press Ctrl-Shift-6 within 2 seconds of when power is supplied to the switch.

Answer: D

12. Which two network topologies are the most popular in switching? (Choose two.)

- A. Bus
- B. Token passing bus
- C. Star
- D. Extended star
- E. Ring

Answer: C,D

Explanation:

http://en.wikipedia.org/wiki/Network_topology

13. What is the function of the Tab key on the Cisco Nexus Operating System command-line interface?

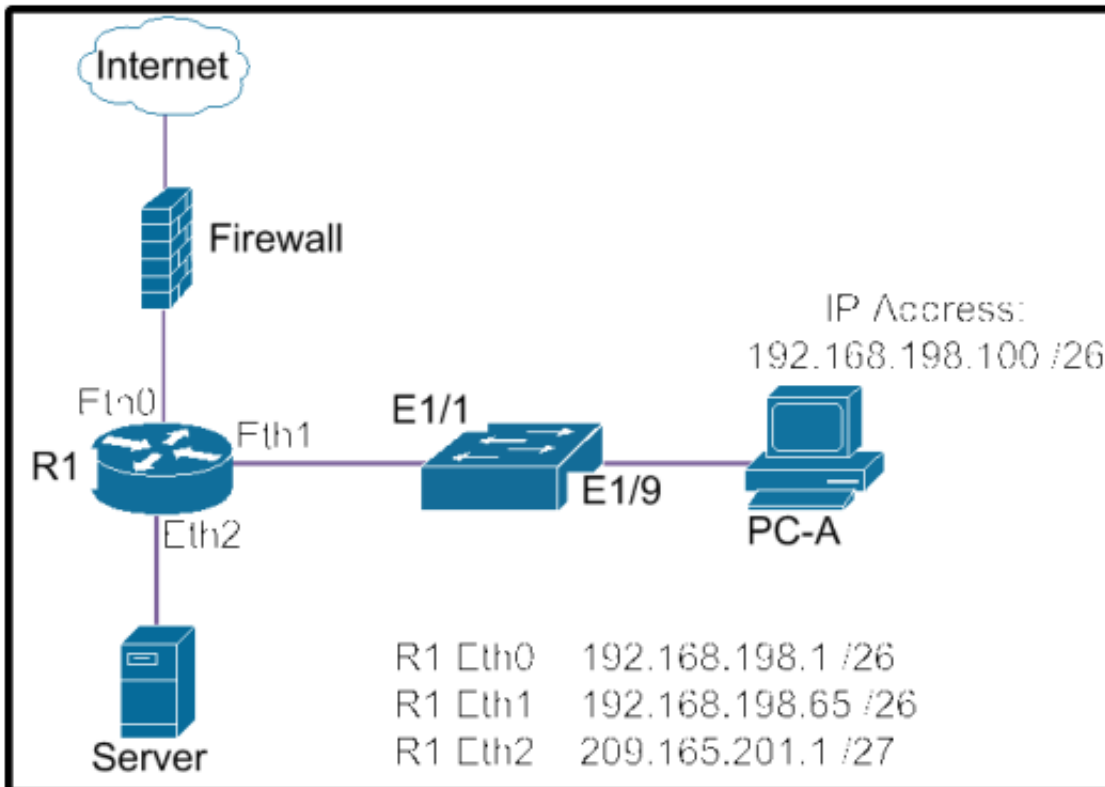
- A. redisplays the current command line
- B. deletes all characters from the cursor to the end of the command line
- C. clears the terminal screen
- D. completes a partially entered command if enough characters are present
- E. moves the cursor one word to the right

Answer: D

Explanation:

"Completes the word for you after entering the first characters of the word, and then pressing the Tab key. All options that match are presented." http://www.cisco.com/en/US/docs/switches/datacenter/sw/4_1/nx-os/fundamentals/configuration/guide/Cisco_Nexus_7000_Series_NX-OS_Fundamentals_Configuration_Guide_Release_4.1_chapter4.html

14. Refer to the exhibit. What two destination addresses will be in the packet and frame header generated at PC-A for traffic going to the Server? (Choose two.)



- A. IP address of the Server
- B. MAC address of router interface eth1
- C. IP address of router interface Eth1
- D. MAC address of the Server
- E. IP address of switch interface E1/9
- F. MAC address of switch interface E1/9

Answer: A,B

15. Which version of Cisco Nexus Operating System became a common operating system for Cisco Nexus switches and Cisco MDS storage switches?

- A. 2.7
- B. 3.3
- C. 3.9
- D. 4.1
- E. 5.01GD
- F. 6.2

Answer: D

Explanation:

"While many of the changes leading to convergence are product releases and features, others are more symbolic. One of these symbolic changes is the rebranding, of Cisco® MDS 9000 SAN-OS Software as Cisco MDS 9000 NX-OS® Software effective with Release 4.1."

http://www.cisco.com/en/US/prod/collateral/ps4159/ps6409/ps5989/ps9898/Rebranding_MDS_9000.html

16. Which command should you use to configure a Cisco Nexus switch port for Layer 2 operation?

- A. `nexus(config-if)#switchport`
- B. `nexus(config-if)#layer-2`
- C. `nexus(config-if)#routed`
- D. `nexus(config)#interface vlan 10nexus(config-if)#switchport`

Answer: A

Explanation:

"If you want to configure a Layer 3 interface for Layer 2, enter the switchport command. Then, if you change a Layer 2 interface to a routed interface, enter the no switchport command."

http://www.cisco.com/en/US/docs/switches/datacenter/nexus5000/sw/command/reference/layer2/n5kl2_cmds_n.pdf

17. Which two options describe services that are provided by UDP? (Choose two.)

- A. session multiplexing
- B. segmentation
- C. connection-oriented
- D. reliable packet delivery
- E. best-effort packet delivery

Answer: A,E

Explanation:

"UDP is faster because there is no error-checking for packets."

http://www.diffen.com/difference/TCP_vs_UDP

18. A network engineer is verifying Layer 2 connectivity of a server to a Cisco Nexus switch by checking Address Resolution Protocol table statistics. Which command shows the MAC address, physical interface,

VLAN, and IP address of a server on a Cisco Nexus switch?

- A. show ip arp detail
- B. show ip arp
- C. show ip arp interface
- D. show arp detail

Answer: A

19. There is a large amount of traffic inside a network segment with a destination address of FF:FF:FF:FF:FF:FF. What type of traffic uses this address?

- A. FF:FF:FF:FF:FF:FF is the Layer 2 broadcast address.
- B. FF:FF:FF:FF:FF:FF is the Layer 2 network address.
- C. FF:FF:FF:FF:FF:FF is the Layer 3 broadcast address.
- D. FF:FF:FF:FF:FF:FF is the Layer 3 network address.
- E. FF:FF:FF:FF:FF:FF is multicast traffic.

Answer: A

20. Which command can change the sequence of a router boot process?

- A. config-register
- B. configuration-register
- C. conf-register
- D. config-registration

Answer: A

Thank You for Trying Our Product

* 100% Pass or Money Back

All our products come with a 90-day Money Back Guarantee.

* One year free update

You can enjoy free update one year. 24x7 online support.

* Trusted by Millions

We currently serve more than 30,000,000 customers.

* Shop Securely

All transactions are protected by VeriSign!

100% Pass Your 640-911 Exam with Our Prep Materials Via below:

<http://www.certleader.com/640-911-dumps.html>