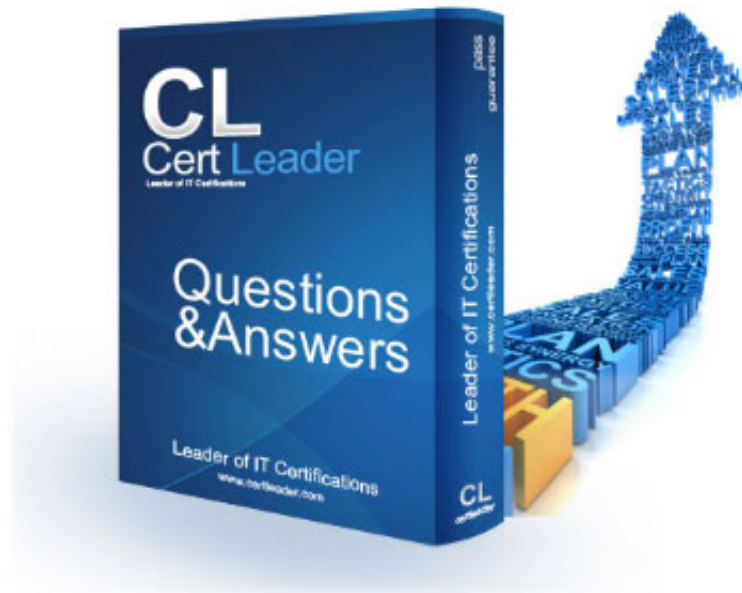


# 642-035 - DCUCT Troubleshooting Cisco Data Center Unified Computing

<https://www.certleader.com/642-035-dumps.html>



1. Which option is a valid file extension for a CIMC configuration file?

- A. .xml
- B. .json
- C. .txt
- D. .exe
- E. .zip

**Answer: A**

2. What is the recommended procedure to update Cisco UCS C-Series rack-mount server firmware?

- A. Launch the Cisco UCS Firmware Update Utility from virtual media.
- B. Launch the Cisco UCS Host Update Utility from virtual media.
- C. Launch the Cisco UCS Server Update Utility from virtual media.
- D. Launch the Cisco UCS CIMC Update Utility from virtual media.

**Answer: B**

3. A customer is troubleshooting QoS in a Cisco UCS domain due to high packet drops in the network. The customer has configured the vNIC and associated QoS policy, and changed the MTU from 1000 to 1200. Packet drops still exist. What is the cause of this issue?

- A. The MTU specified here must be greater than the MTU specified in the associated QoS system class. If this MTU value is less than the MTU value in the QoS system class, packets may be dropped during data transmission.
- B. The MTU specified here must be equal to or less than the MTU specified in the associated QoS system class. If this MTU value exceeds the MTU value in the QoS system class, packets may be dropped during data transmission.
- C. The MTU specified here must be less than the MTU specified in the associated QoS system policy. If this MTU value exceeds the MTU value in the QoS system policy, packets may be not be dropped during data transmission.
- D. The MTU must be optimized and should be changed to fc with the CLI command set mtu fc.

**Answer: B**

4. Which protocols can be used to send to Cisco TAC (Technical Assistance Center) the show tech-support command output information about the Cisco UCS domain? (Choose two.)

- A. TFTP
- B. FTP
- C. SCP
- D. Telnet
- E. SecureTelnet

**Answer:** B,C

5. The Core File Exporter automatically exports cores to a remote server as they are generated. Which protocol does it use for this action?

- A. FTP
- B. SCP
- C. SFTP
- D. TFTP

**Answer:** D

6. In new Cisco UCS release 2.0 installations, what are the default VLAN IDs?

- A. Ethernet VLAN default ID is 4048, FCOE default VLAN ID 4048
- B. Ethernet VLAN default ID is 1, FCOE default VLAN ID is 3968
- C. Ethernet VLAN default ID is 1, FCOE default VLAN ID is 2
- D. Ethernet VLAN default ID is 2, FCOE default VLAN ID is 4047
- E. Ethernet VLAN default ID is 1, FCOE default VLAN ID is 4048

**Answer:** E

7. Which statement is true about system event logs?

- A. By default, they require manual clearing.
- B. They report operating system crashes and errors.
- C. They are also referred to as system error logs.
- D. They can only be accessed from Cisco UCS Manager.

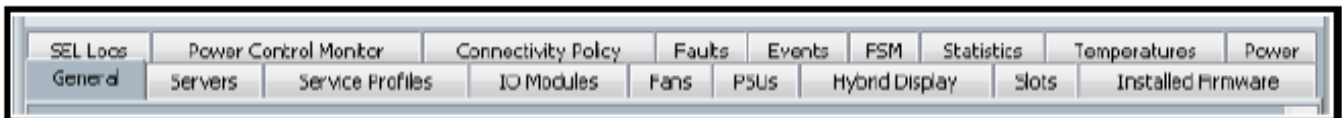
**Answer: A**

8. A customer is trying to boot an operating system installed on a Cisco UCS B-Series blade server after a RAID1 cluster migration. The RAID LUN remains in inactive state during and after the service profile association and the server does not boot. What is the cause of this problem?

- A. RAID1 is not supported in cluster migration mode on a Cisco UCS B-Series blade server.
- B. The local disk configuration policy in the service profile on the server is configured with Any Configuration mode rather than RAID1.
- C. The server needs to be booted via SAN in cluster migration to support RAID1.
- D. The Cisco UCS B-Series blade server has older firmware that needs to be updated first.

**Answer: B**

9. Refer to the exhibit.



Which tab would be the most useful for troubleshooting a blade discovery problem?

- A. Faults
- B. Events
- C. FSM
- D. Servers

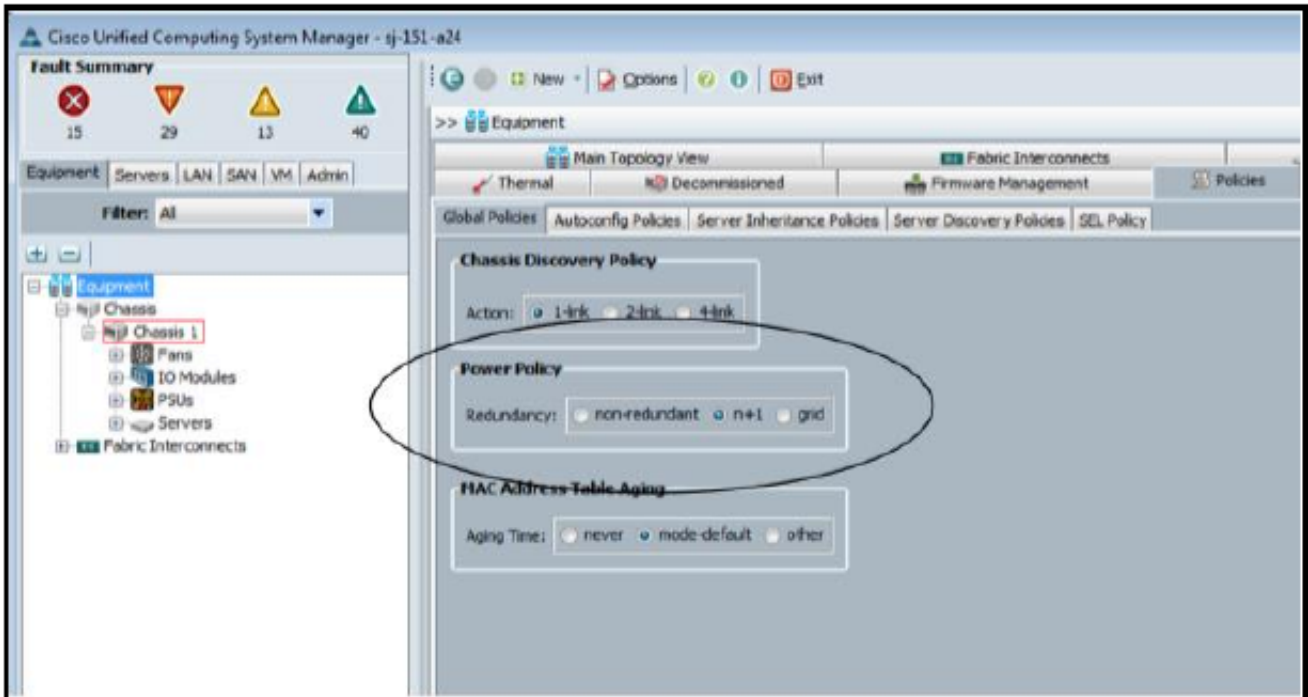
**Answer: C**

10. How will the Cisco UCS Manager react when all of the FSM tasks fail?

- A. retries for 60 seconds
- B. raises faults and alarms
- C. restarts from the previous known good task
- D. sends an NOC SNMP trap email

**Answer: B**

11. Refer to the exhibit.



Which type of power policy is shown when referring to a Cisco UCS environment?

- A. chassis
- B. blade server
- C. fabric interconnect
- D. global
- E. switch

**Answer: D**

12. RBAC is a method of restricting access for a particular user on which two of these? (Choose two.)

- A. roles
- B. realm
- C. locales
- D. RADIUS
- E. LDAP

**Answer: A,C**

13. You attempt to perform an ESXi update on a Cisco UCS C250 server, but the update does not recognize the NICs. You must perform the update as quickly as possible. Which step must you do first?

- A. Check the UCS compatibility matrix and replace the NIC with a supported one.
- B. Reconfigure the NIC ID on the LOM.
- C. Update the LOM firmware by using the Cisco Host Update Utility.
- D. Update the NIC firmware by using the Cisco Host Update Utility.

**Answer: C**

## Thank You for Trying Our Product

\* 100% Pass or Money Back

All our products come with a 90-day Money Back Guarantee.

\* One year free update

You can enjoy free update one year. 24x7 online support.

\* Trusted by Millions

We currently serve more than 30,000,000 customers.

\* Shop Securely

All transactions are protected by VeriSign!

**100% Pass Your 642-035 Exam with Our Prep Materials Via below:**

<https://www.certleader.com/642-035-dumps.html>