

VCP550 - VMware Certified Professional on vSphere 5.5

<http://www.certleader.com/VCP550-dumps.html>



1. Which statement is true about the hardware configuration for ESXi hosts participating in a virtual SAN?

- A. The hosts must have identical hardware.
- B. Each host must have at least one Solid State Drive (SSD).
- C. The hosts must have network attached storage.
- D. Each host must have a RAID Controller.

Answer: B

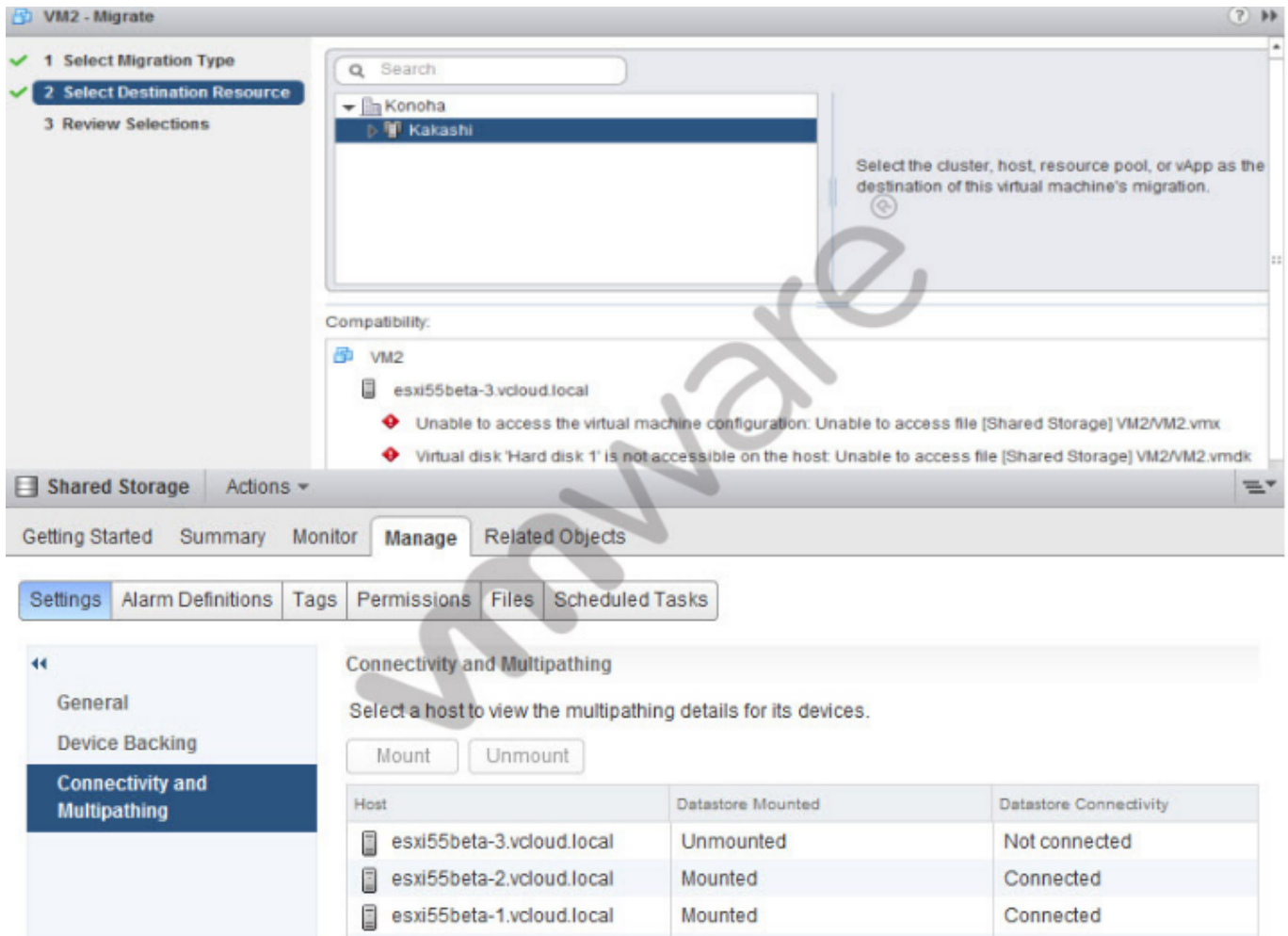
2. A VMware administrator determines that the active memory on an ESXi 5.x host is 20% and the consumed memory is 90%.

How much host memory is available to virtual machines?

- A. 80%
- B. 10%
- C. 70%
- D. 20%

Answer: A

3. -- Exhibit --



-- Exhibit --

A vSphere administrator attempts to manually vMotion a virtual machine but receives error messages related to the Shared Storage datastore shown in the exhibit.

The administrator uses the vSphere Web Client and locates the datastore settings shown:

Which action should the administrator take to resolve these errors?

- A. Reconnect server3 to the vCenter server.
- B. Select server3 and click Mount.
- C. Remove server3 from the cluster then re-add it.
- D. Right-click Not connected and select Connect.

Answer: B

4. An administrator notices that a virtual machine fails to start when right-clicking on the VM in the inventory and clicking Power -> Power On.

Which log file should the administrator check first to determine why the virtual machine will not start?

- A. vmkernel.log
- B. messages
- C. vpxa.log
- D. fdm.log

Answer: A

5. A server administrator reports that a virtual machine has displayed the following message twice in the past 12 months:

No boot device found

Which virtual machine boot option should the administrator configure to resolve this issue?

- A. Failed Boot Recovery
- B. Force BIOS Setup
- C. Boot Delay
- D. Network Boot Retry

Answer: A

6. An administrator needs to install vSphere Update Manager using an external SQL Server 2008 R2 database. The administrator has created the database successfully, but cannot establish connectivity when testing the DSN.

Which configuration setting could be causing the issue?

- A. The database was configured to use Windows authentication.
- B. The DSN was configured using a 32-bit ODBC connection.
- C. Update Manager does not support the use of a remote database.
- D. Port 9087 is being blocked by Windows Firewall on the Update Manager server.

Answer: A

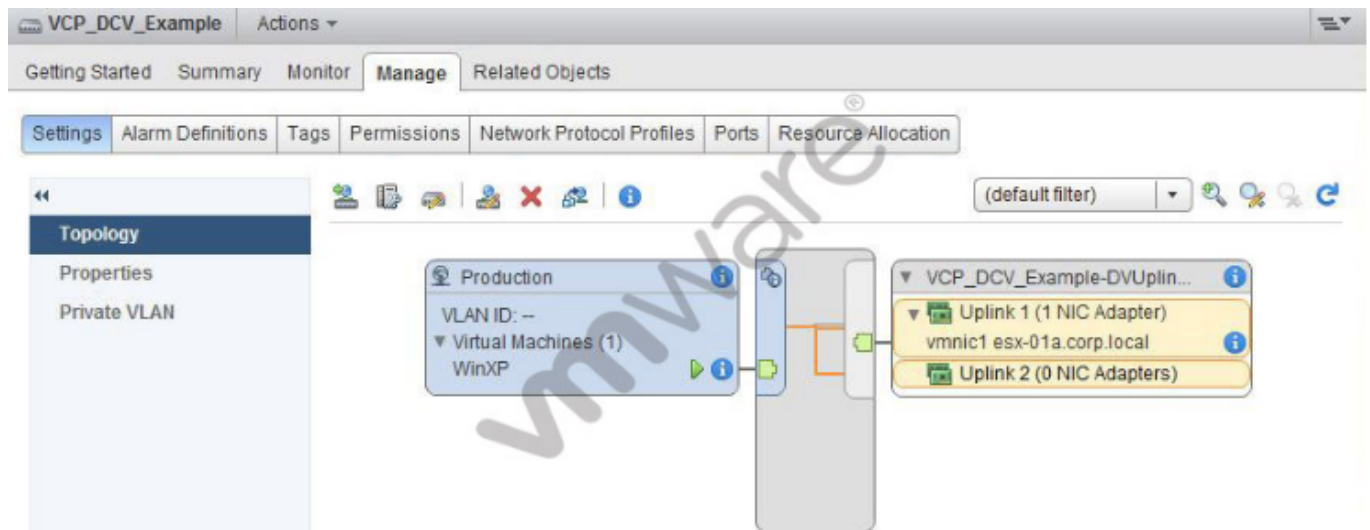
7. Which Web service is installed during the vCenter Server installation?

- A. Internet Information Service (IIS)

- B. WEBrick
- C. Tomcat Web server
- D. LiteSpeed Web server

Answer: C

8. -- Exhibit --



-- Exhibit --Users accessing the WinXP virtual machine shown in the exhibit report intermittent connectivity to the corporate network.

The configuration is as follows:

- .This virtual machine runs in a DRS/HA cluster of two ESXi hosts.
- .The VCP_DCV_Example vSphere Distributed Switch was recently created.
- .The WinXP virtual machine was recently migrated from another vSphere Distributed Switch.
- .The WinXP virtual machine was able to connect prior to migration to this switch.
- .No changes to the VCP_DCV_Example switch have been made since creation.

Which step should the administrator take to resolve the WinXP virtual machine's intermittent connectivity to the corporate network?

- A. Add the ESXi host to the switch where the virtual machine is currently running
- B. Disable Port Blocking on the VCP_DCV_Example switch
- C. Disable Port Blocking on the Production port group
- D. Enable Network I/O Control on the switch to better balance I/O

Answer: A

9. A vSphere administrator enables and configures a Software iSCSI Initiator, and configures an iSCSI vmkernel portgroup with Port Binding. The SAN administrator creates a few LUNs on an iSCSI server. However, when the vSphere administrator adds the IP address of the iSCSI server in the Dynamic Discovery list, no iSCSI targets are detected.

What condition would result in this behavior?

- A. The iSCSI vmkernel portgroup and the iSCSI server are on different subnets.
- B. The iSCSI server IP address should be entered in the Static Discovery instead of Dynamic Discovery list.
- C. The network card bound to the iSCSI portgroup is 1Gbps Ethernet instead of 10Gbps.
- D. A Software iSCSI Initiator cannot use Port Binding in conjunction with Dynamic Discovery.

Answer: A

10. A Windows Server 2008 virtual machine with the following configuration receives an Out of Space condition indicator:

- .The virtual machine uses thin provisioned virtual disks.
- .The VMFS5 datastore on which the virtual machine's files reside is on a thin provisioned LUN.
- .30% of the VMFS datastore content is no longer needed.
- .The storage array supports VASA and VAAI.

Which action should the vSphere administrator take to resolve the Out of Space problem without requesting additional space on the storage array?

- A. Delete unneeded files on the VMFS datastore and then use vmkfstools to reclaim deleted blocks.
- B. Delete unneeded files on the VMFS datastore, right-click the datastore in vSphere Web Client, and then select the Reclaim Deleted Blocks option.
- C. Delete some files from the guest OS and defrag its file system.
- D. Delete some files from the guest OS and use vmkfstools to reclaim the deleted blocks.

Answer: A

11. An administrator is deploying a virtual machine from a template.

Assuming all of the inventory objects below exist in the implementation, what is the highest level in the vCenter Server hierarchy to which a virtual machine can be deployed?

- A. Datacenter
- B. Cluster
- C. Resource Pool
- D. Host

Answer: B

12. An administrator needs to prevent two virtual machines from running on the same host at any time.

Which DRS rule should the administrator apply?

- A. vm-to-vm affinity
- B. vm-to-host affinity
- C. vm-to-vm anti-affinity
- D. vm-to-host anti-affinity

Answer: C

13. A large aerospace company utilizes a mission critical application requiring a large database server with 16 vCPUs and 500GB of RAM. Because of the critical nature of the application, the company also wants to leverage Reliable Memory Technology.

What is the minimum edition of vSphere that will support this scenario?

- A. vSphere Standard Edition
- B. vSphere with Operations Management Standard Edition
- C. vSphere Enterprise Edition
- D. vSphere with Operations Management Enterprise Edition

Answer: C

14. A vSphere administrator needs to configure the environment to send a notification to a monitored email address every time a vSphere alarm is triggered.

Which procedure should the administrator use to accomplish the task?

- A. Use the vSphere web client to configure the vCenter Server SMTP settings. Edit the alarm action to send a notification email.
- B. Use the vSphere web client to configure the vCenter Server SNMP settings. Edit the alarm action to send a

notification email.

C. Use the vSphere web client to create a vCenter Server scheduled task that will send a notification email when an alarm is triggered.

D. Use the vSphere web client to create a vCenter Orchestrator workflow that will send a notification email when an alarm is triggered.

Answer: A

15. Which two statements are true regarding a new vSphere deployment that is using software FCoE boot from SAN? (Choose two.)

A. Multi-pathing options must be configured by the vmkernel after boot.

B. The adapter must support iBFT or UEFI.

C. The adapter must support FBFT or FBPT.

D. Multi-pathing options must be configured in the Boot ROM.

Answer: A,C

16. A VMware administrator determines that a low priority virtual machine is negatively affecting the disk I/O performance of a higher priority virtual machine. The virtual machines are hosted on the same datastore presented to the same ESXi host.

Which configuration option should the VMware administrator use to resolve this issue?

A. Increase the disk share value for the high priority VM.

B. Migrate the low priority VM to another ESXi host.

C. Create a Storage Profile for each priority level.

D. Enable vSphere APIs for Array Integration (VAAI).

Answer: A

17. An administrator has configured a vSphere 5.5 test environment to evaluate the Virtual SAN feature using Automatic Mode Disk Groups. The administrator needs to disable the Virtual SAN cluster while preserving the virtual machines running on that cluster.

The administrator has already installed a vSphere 5.5 Client on a Windows 7 desktop and also has access to the vSphere 5.5 Web Client.

What should the administrator do to disable the Virtual SAN?

A. Use Storage vMotion to migrate the virtual machines to another datastore then use the vSphere 5.5 Client

to disable the Virtual SAN.

B. Use Storage vMotion to migrate the virtual machines to another datastore then use the vSphere 5.5 Web Client to disable the Virtual SAN.

C. Use the vSphere 5.5 Client to disable the Virtual SAN, which will automatically migrate the virtual machines via the Storage DRS feature.

D. Use the vSphere 5.5 Web Client to disable the Virtual SAN, which will automatically migrate the virtual machines via the Storage DRS feature.

Answer: B

18. An administrator needs to join several ESXi hosts in the environment to the corporate Active Directory instance. The container and path for the OU is Servers\VMware. The FQDN of the local Active Directory is CORP.AD.

Which option accurately shows the information an administrator would enter when configuring an ESXi host to join the domain and ensures the host is placed in the appropriate OU?

A. ldap://CORP.AD:389/Servers/VMware

B. CORP.AD/Servers/VMware

C. cn=VMware, ou=Servers, dc=CORP, dc=AD

D. ou=VMware, ou=Servers, dc=CORP, dc=AD

Answer: B

19. An administrator receives the following error message: Unmanaged I/O workload detected on shared datastore.

Which vSphere feature is the likely source of this error?

A. Network I/O control

B. Storage I/O control

C. Storage DRS

D. HA datastore heartbeats

Answer: B

20. An administrator has created a Virtual SAN Cluster using Automatic Mode Disk Groups. There is very little storage space left in the cluster. The administrator has access to an iSCSI storage array.

Which approach should the administrator take to expand the Virtual SAN Cluster?

- A. Add new hosts to the cluster with available local disks then click the Claim Disks icon in the Disk Management section under the Virtual SAN tab.
- B. Add new disks to the hosts in the cluster then click the Claim Disks icon in the Disk Management section under the Virtual SAN tab.
- C. Add new hosts to the cluster with available local disk. No further action is required to claim the added storage.
- D. Provision new LUNs on the iSCSI storage and present one LUN to each host in the cluster. No further action is required to claim the added storage.

Answer: C

21. An administrator using vCenter Operations Manager notices an increase in resource consumption by virtual machines over a period of time. The administrator needs to understand how adding more hosts or increasing resources in existing hosts will address the growing resource requirements of the virtual machines.

Which vCenter Operations Manager feature can provide this information?

- A. Host or Cluster Capacity Optimization Report
- B. What-if Scenarios
- C. Density and Reclaimable Waste badges
- D. Virtual Machine Optimization Report

Answer: B

Thank You for Trying Our Product

* 100% Pass or Money Back

All our products come with a 90-day Money Back Guarantee.

* One year free update

You can enjoy free update one year. 24x7 online support.

* Trusted by Millions

We currently serve more than 30,000,000 customers.

* Shop Securely

All transactions are protected by VeriSign!

100% Pass Your VCP550 Exam with Our Prep Materials Via below:

<http://www.certleader.com/VCP550-dumps.html>